

## Answers: 6.1.1.5 Lab - Task Manager in Windows 7 and Vista

### Introduction

In this lab, you will explore Task Manager and manage processes from within Task Manager.

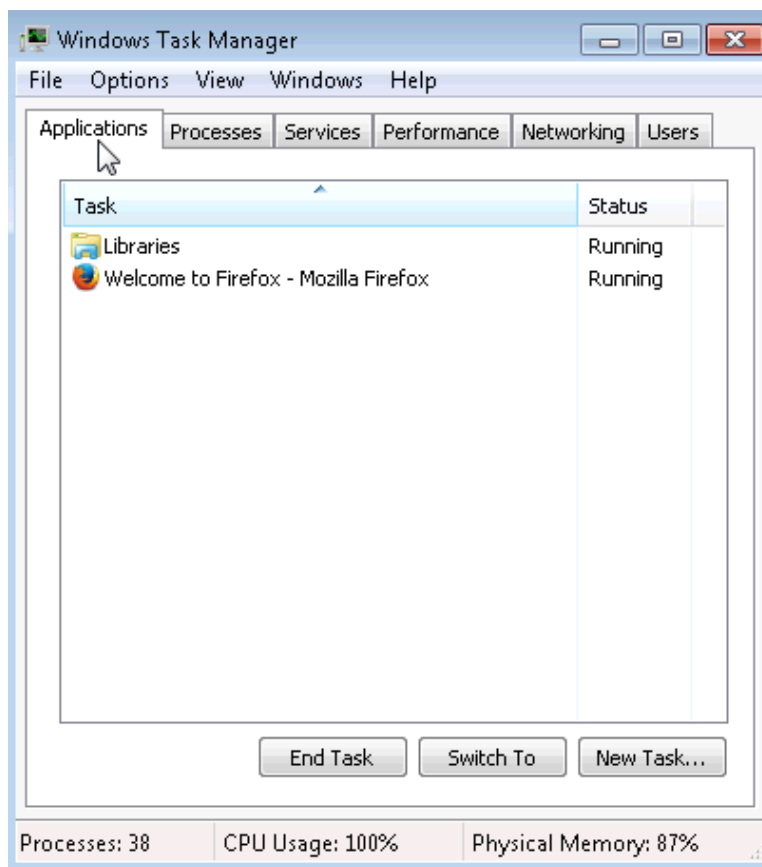
### Recommended Equipment

The following equipment is required for this exercise:

- A computer running Windows 7 or Vista

### Step 1: Work in the Applications Tab of Windows Task Manager.

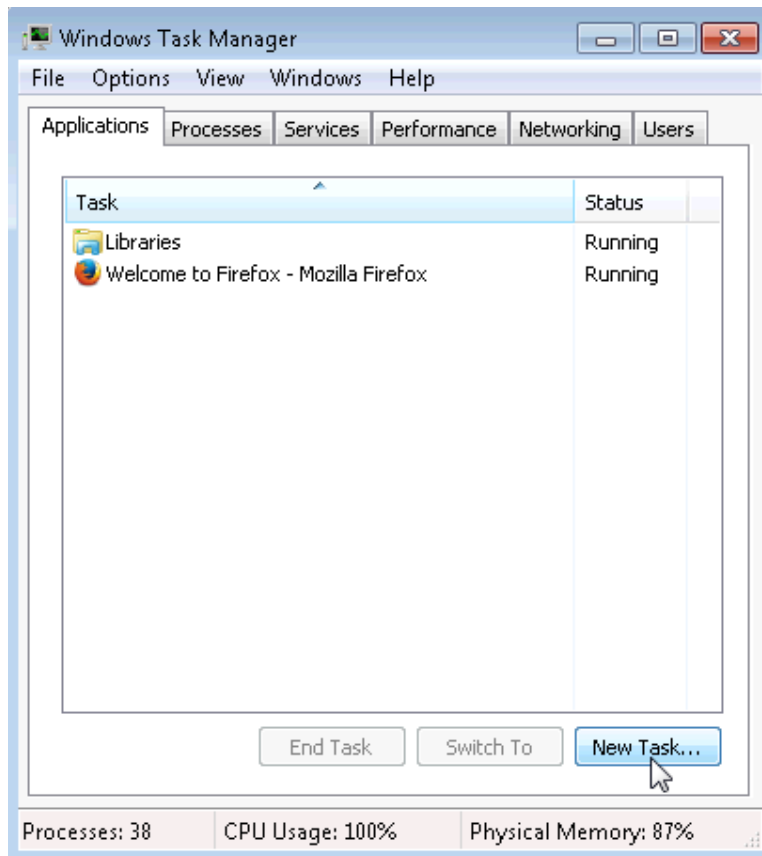
- Log on to Windows as an administrator.
- Open a browser and a folder.
- Click the **desktop** and press **Ctrl-Alt-Delete > Start Task Manager > Applications** tab.



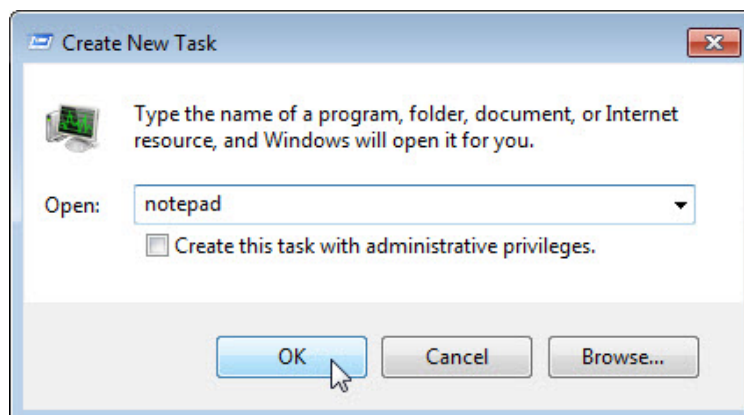
- Select the open browser and then click **Switch To**.  
What happened to the browser?

## Lab – Task Manager in Windows 7 and Vista

- e. Bring **Windows Task Manager** to the front of the desktop. Click **New Task** to open the **Create New Task** window.



- f. In the **Open** field, type **Notepad** and click **OK**.

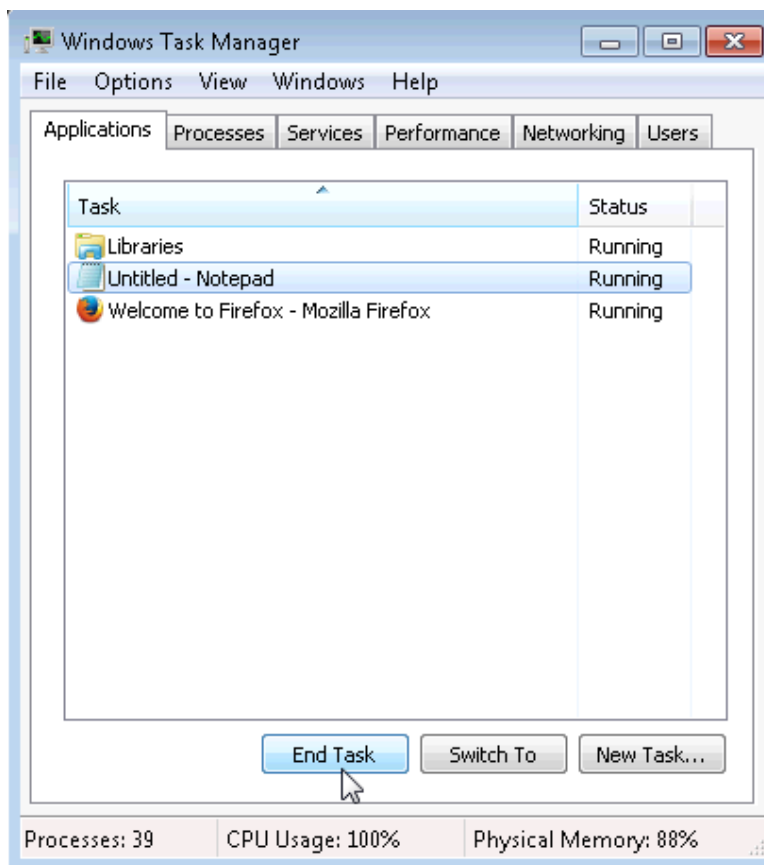


What happens?

## Lab – Task Manager in Windows 7 and Vista

---

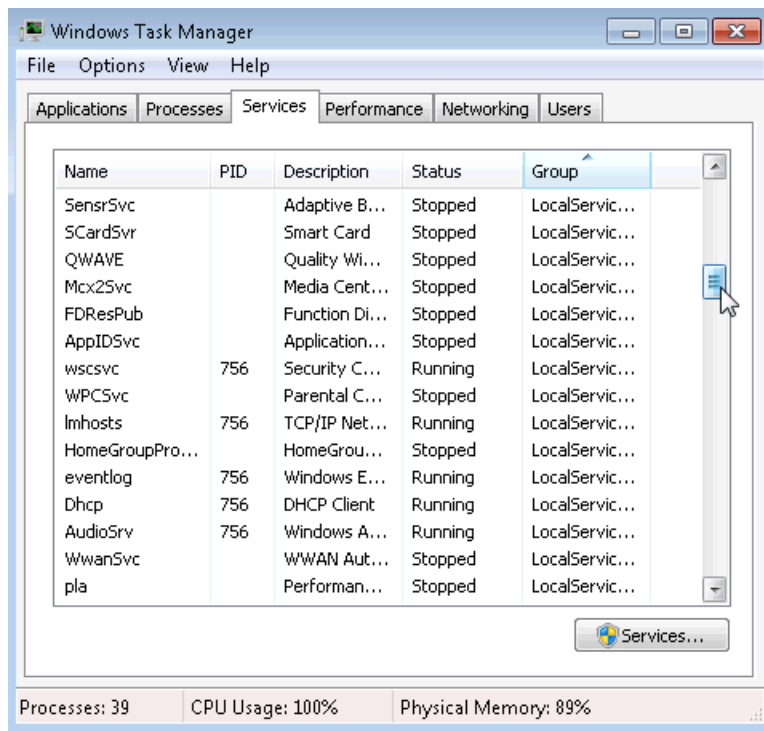
- g. Navigate back to the **Windows Task Manager**, select **Notepad**, and click **End Task**.



What happens?

**Step 2: Work in the Services tab of Windows Task Manager.**

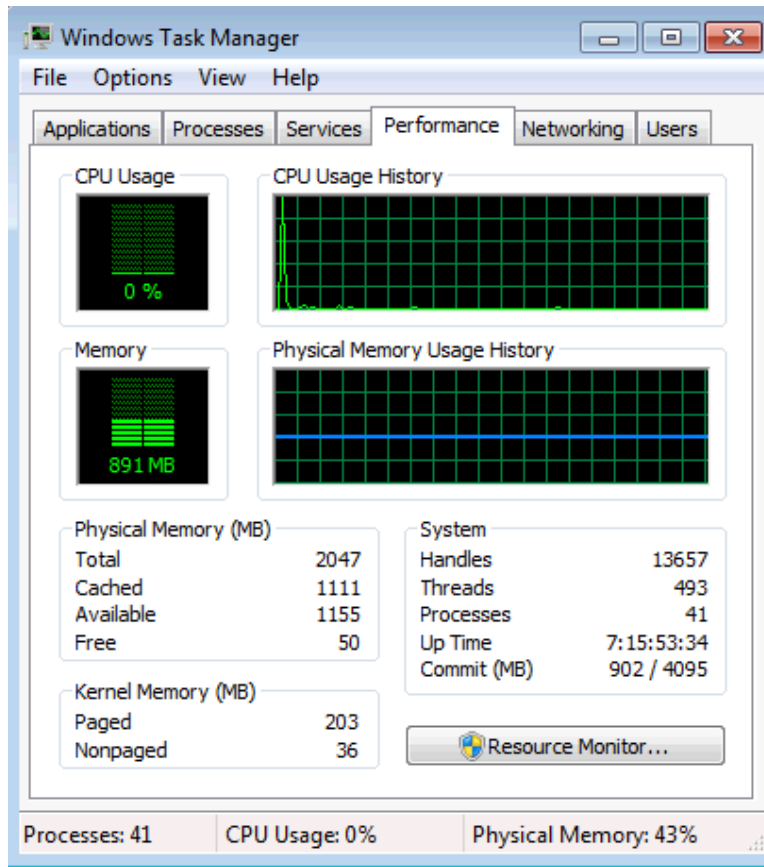
- a. Click the **Services** tab. Use the scroll bar on the right of the **Services** window to view all the services listed



What are the statuses listed?

**Step 3: Work in the Performance tab of Windows Task Manager.**

- a. Click the **Performance** tab.



How many threads are running?

How many processes are running?

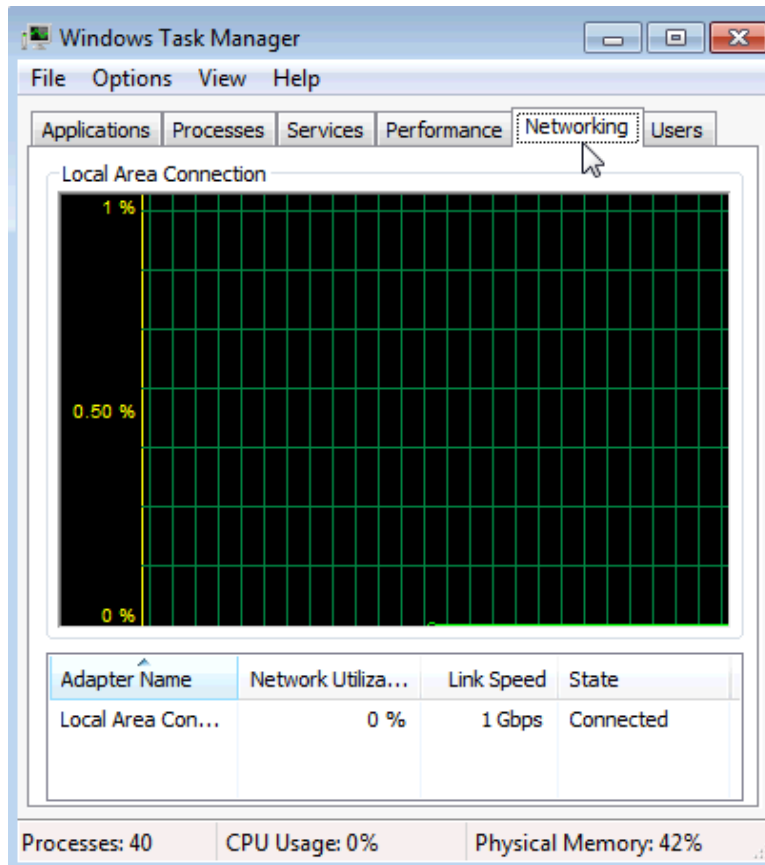
What is the total physical memory (MB)?

What is the available physical memory (MB)?

How much physical memory (MB) is being used by the system?

**Step 4: Work in the Networking tab of Windows Task Manager.**

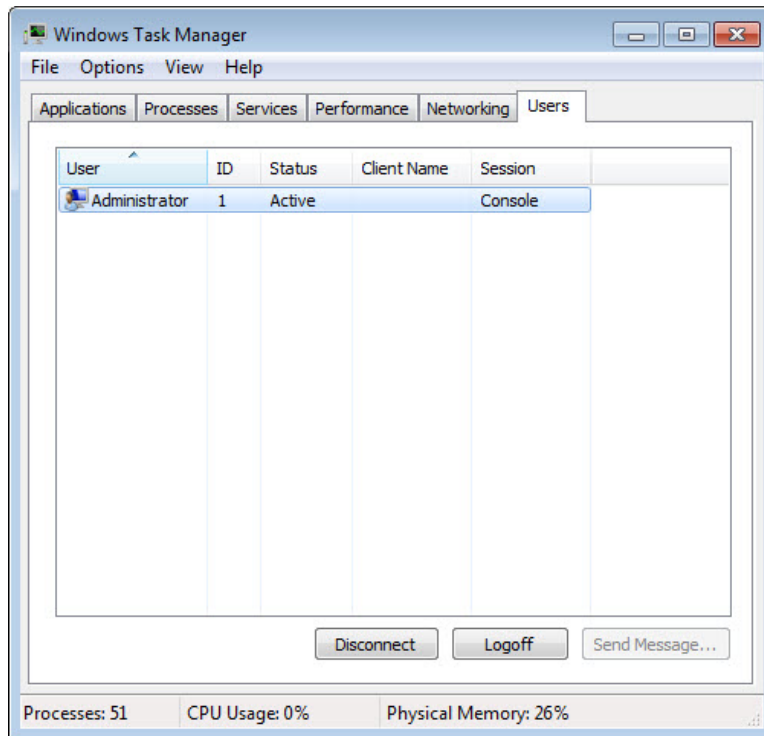
- a. Click the **Networking** tab.



What is the link speed?

**Step 5: Work in the Users tab of Windows Task Manager.**

- a. Click the **Users** tab.

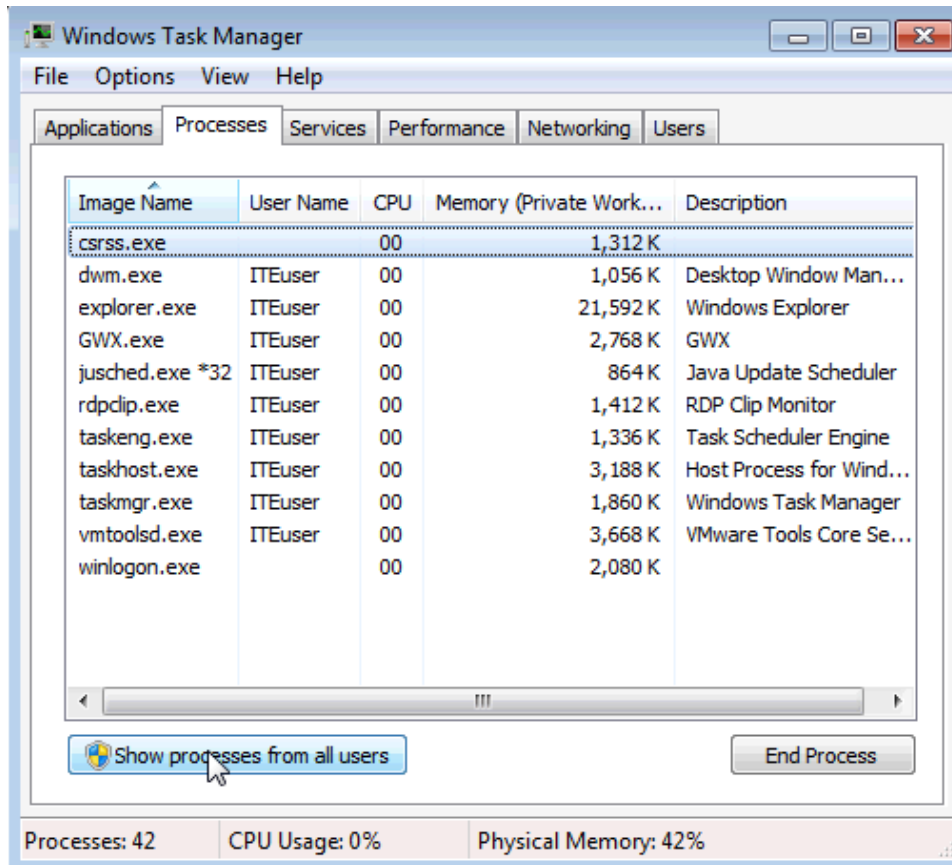


List all users and their status.

What actions can you perform on the user from this window?

**Step 6: Work in the Processes tab of Windows Task Manager.**

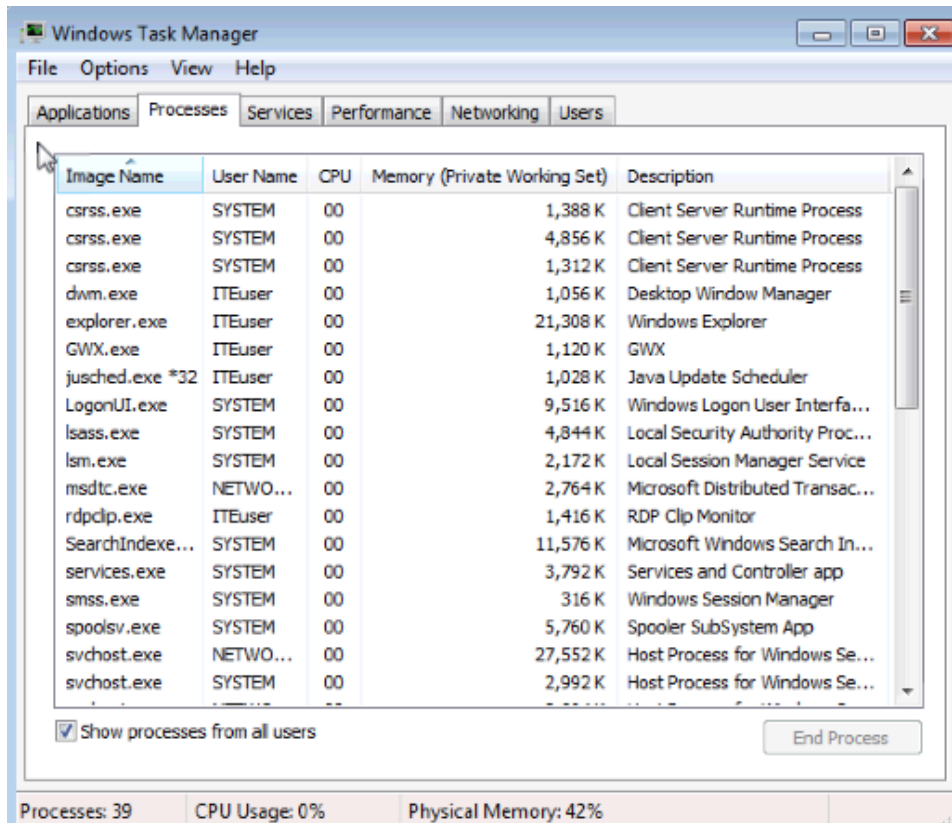
- a. Click the **Processes** tab.



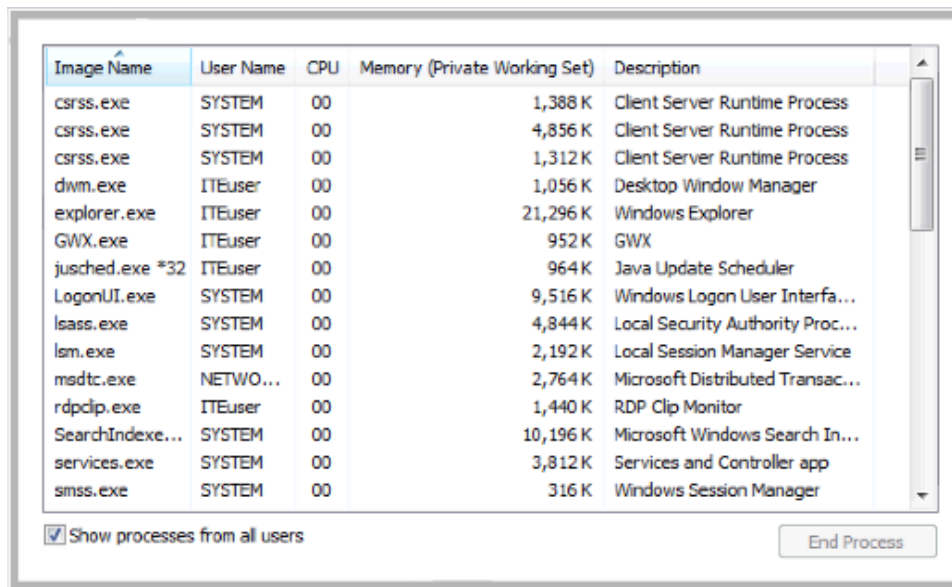


## Lab – Task Manager in Windows 7 and Vista

- b. Check the checkbox **Show processes from all users**.



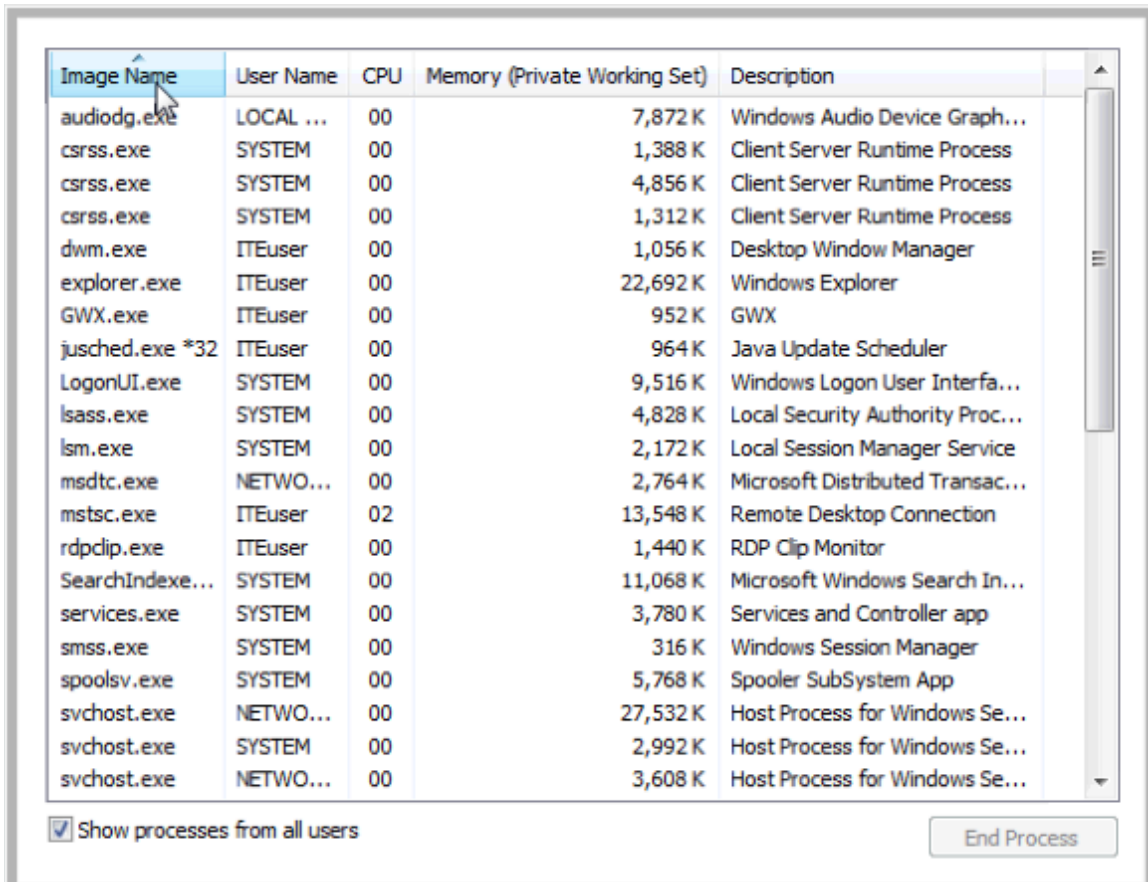
- c. Double-click the white border around the Processes tab. This changes the view of Windows Task Manager to compact mode.



**Note:** The **User Account Control** window may open in Vista asking for permission to continue. Click **Continue**.

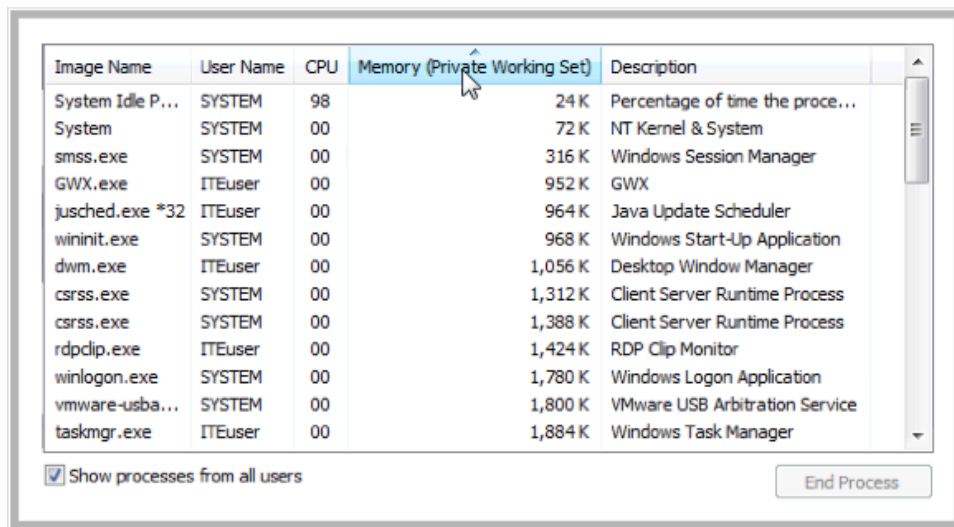
## Lab – Task Manager in Windows 7 and Vista

- d. Click the heading **Image Name**. Click **Image Name** again.



What effect does this have on the columns?

- e. Click **Memory (Private Working Set)**.



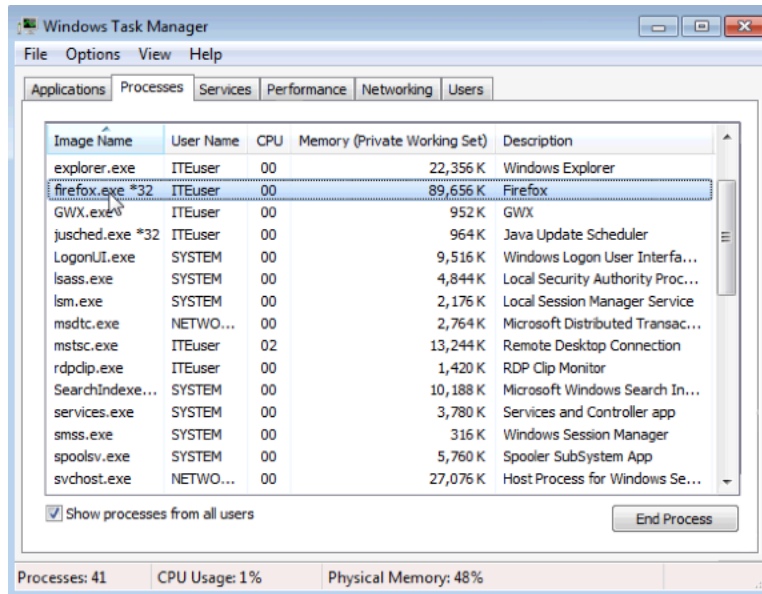
## Lab – Task Manager in Windows 7 and Vista

What affect does this have on the columns?

- f. Double-click the outside border again to return to tabs mode.
- g. Open a browser.

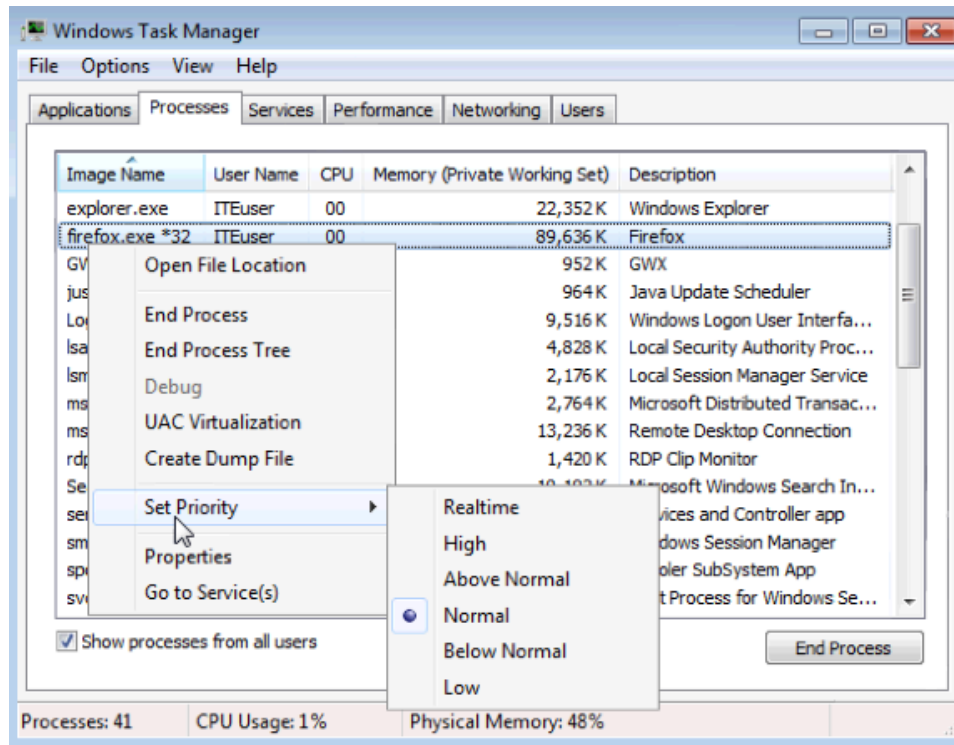
**Note: Firefox** is used in this lab. However, any browser will work. Just substitute your browser name whenever you see the word **Firefox**.

- h. Return to the **Windows Task Manager**. Click **Image Name** so the list is in alphabetical order, then locate and select **firefox.exe**.



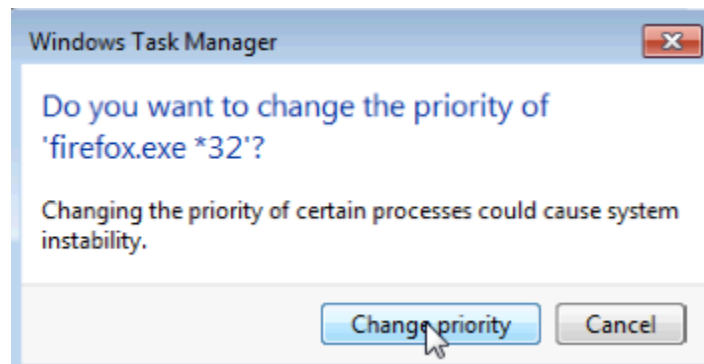
## Lab – Task Manager in Windows 7 and Vista

- i. Right-click **firefox.exe** > **Set Priority**.



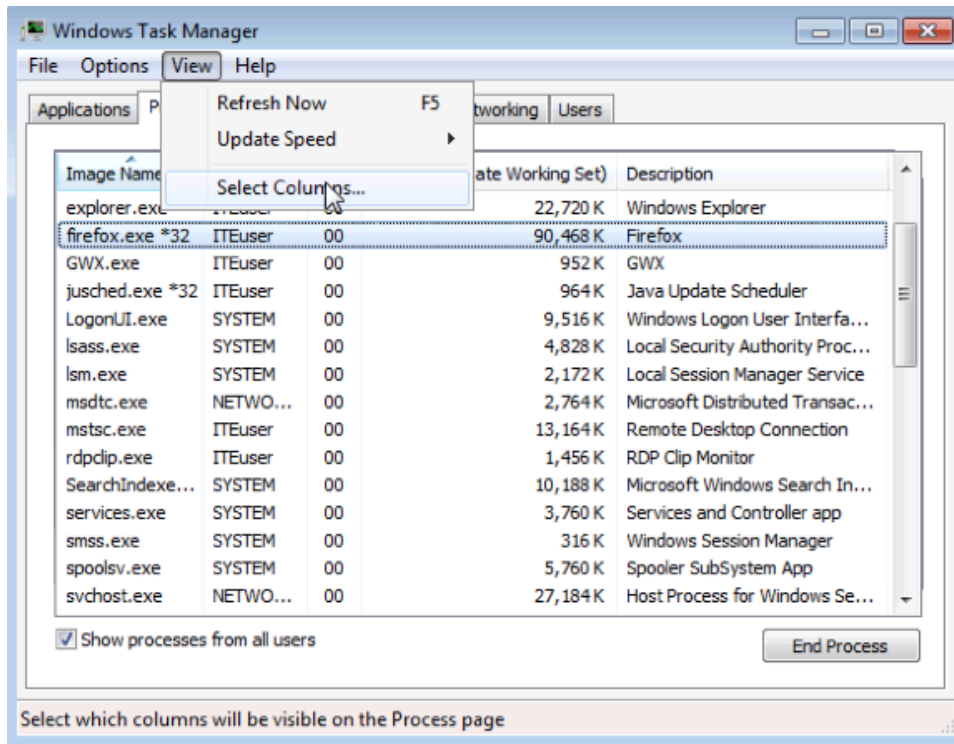
What is the default priority for the browser?

- j. Set the priority to **Above Normal**. Then click **Change priority** in the Windows Task Manager warning message.

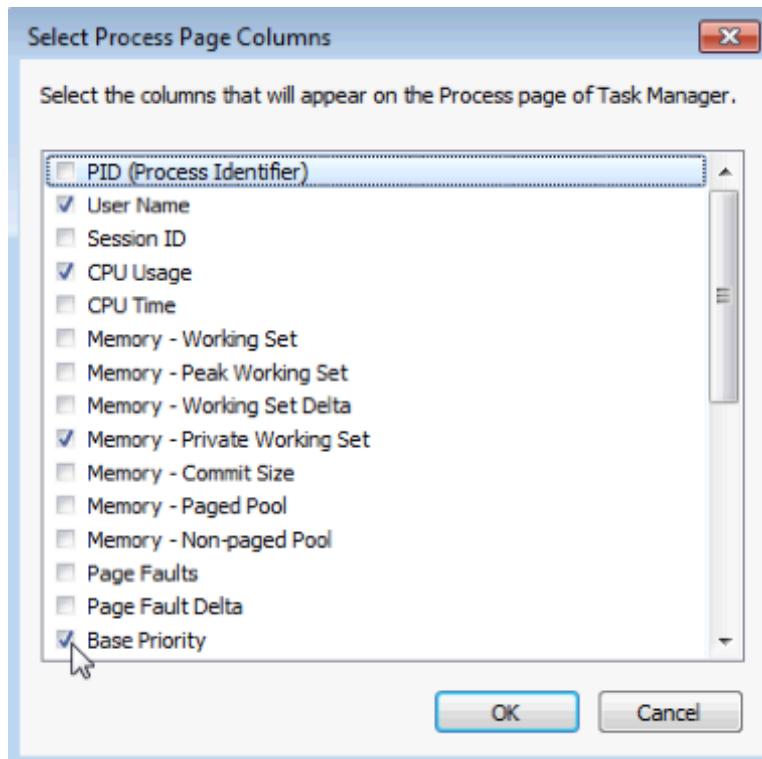


**Step 7: Change the fields that are displayed in the Windows Task Manager.**

- a. Click **View > Select Columns**.

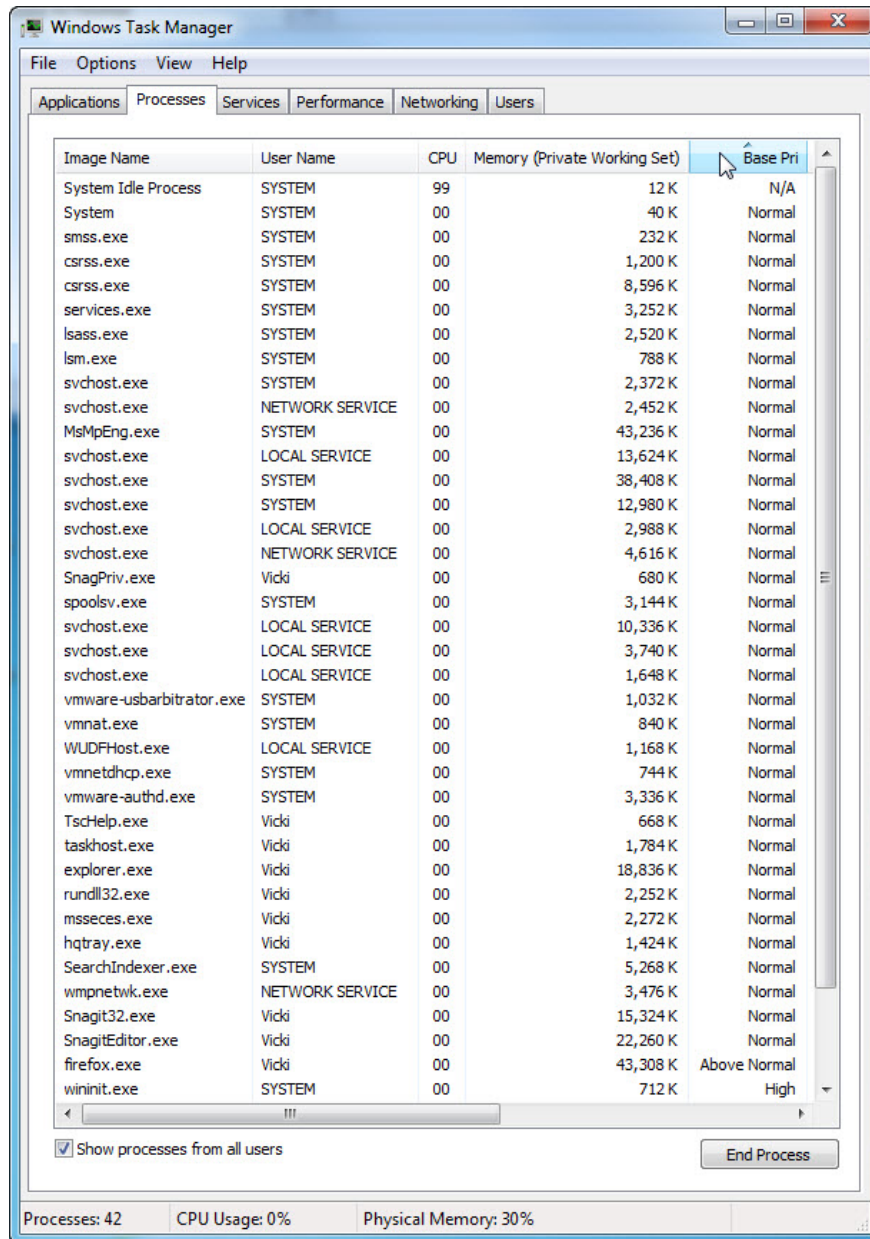


- b. The **Select Process Page Columns** window opens. Check **Base Priority** and click **OK**.



## Lab – Task Manager in Windows 7 and Vista

- c. Expand the width of the **Windows Task Manager** so the **Base Priority** column is visible.

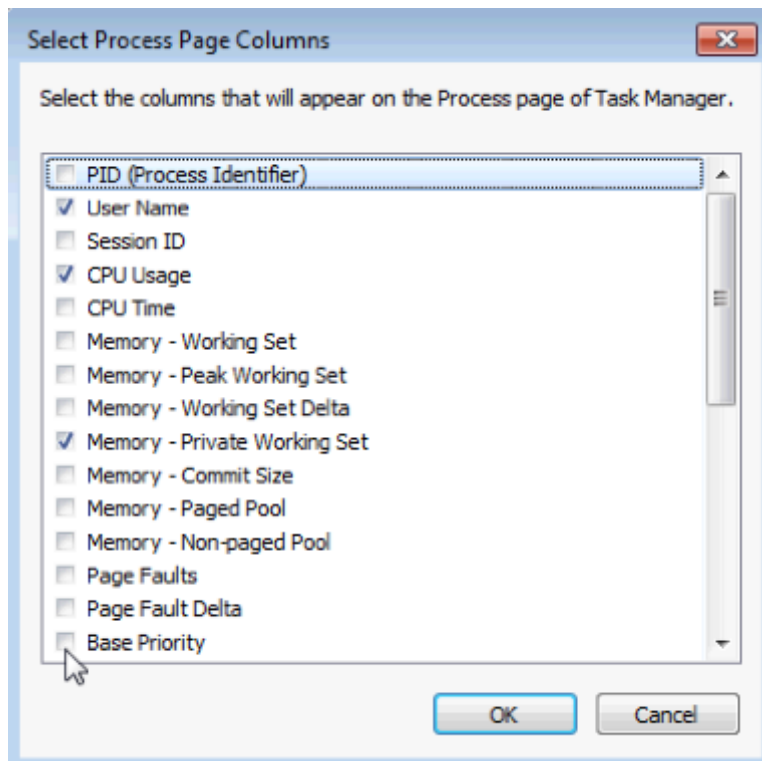


List the name of the image that has a base priority of Above Normal?

Which image name has a base priority of N/A?

- d. Reset Firefox.exe base priority to normal. To do this, right-click **firefox.exe** > **Set Priority** > **Normal** > **Change priority**.

- e. Click **View > Select Columns**. Uncheck **Base Priority** and click **OK**.



- f. Close **Firefox**.  
Is Firefox listed as a process?
- g. Close all open windows.

## Reflection

Why is it important for an administrator to understand how to work within the Windows Task Manager?